



Density with Identity

This collection of six LEED Platinum dwellings is built to a density of 30 units per acre. According to Vishaan Chakrabarti, if the world's housing were built at this density the global population would fit into the state of Texas. The project attempts to define a new housing model for Los Angeles that reduces sprawl by looking towards a greener development ethos.

Rather than build a single row of homes serviced by a single loaded driveway, these homes share a unique serpentine driveway weaving around each unit. This configuration increases each unit's exterior surface area by over 40% which results in three walls of day-lighting and ventilation, additional privacy and individuality, while baffling street noise.

The exterior of the project is clad in white vertical fins, screening direct views into the homes while creating an engaging streetscape that receives the shadows of trees during the day and glowing gently at night. The small-scale density underlying this project occupies a comfortable place between the vertical growth of downtown and the horizontal sprawl of the valley.



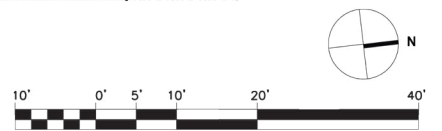
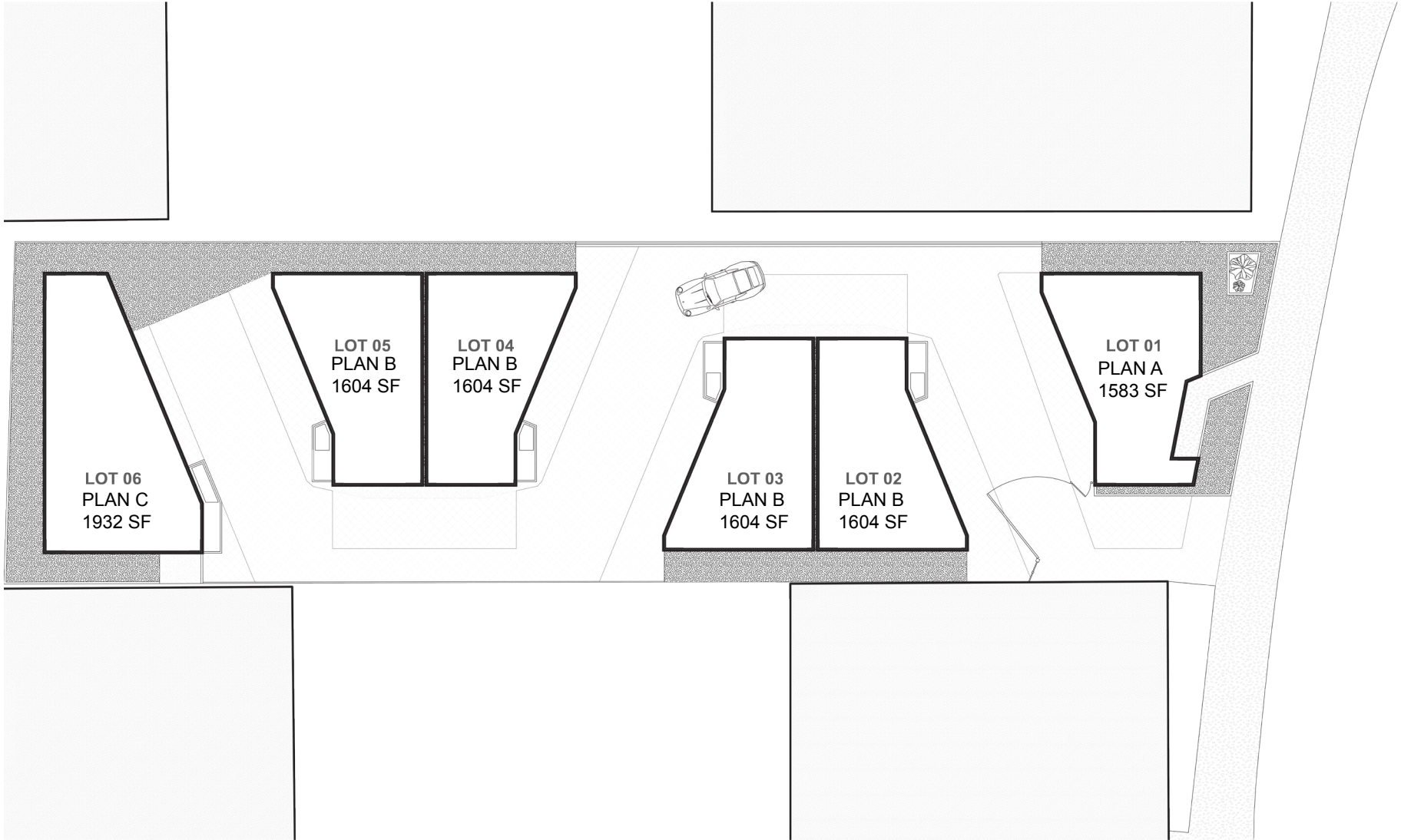


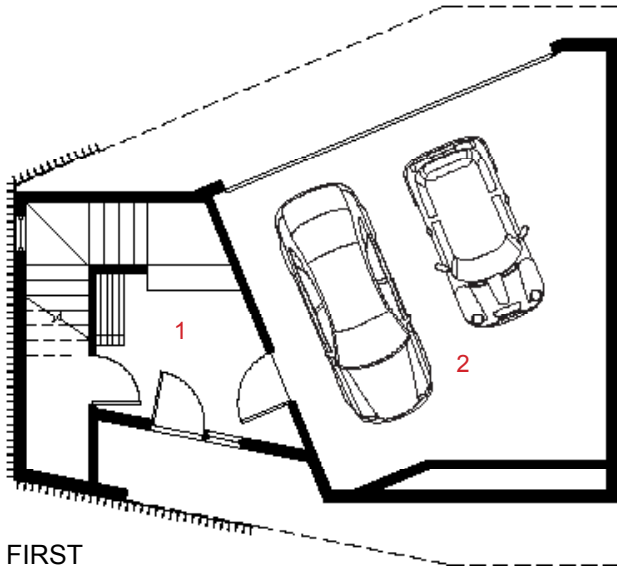




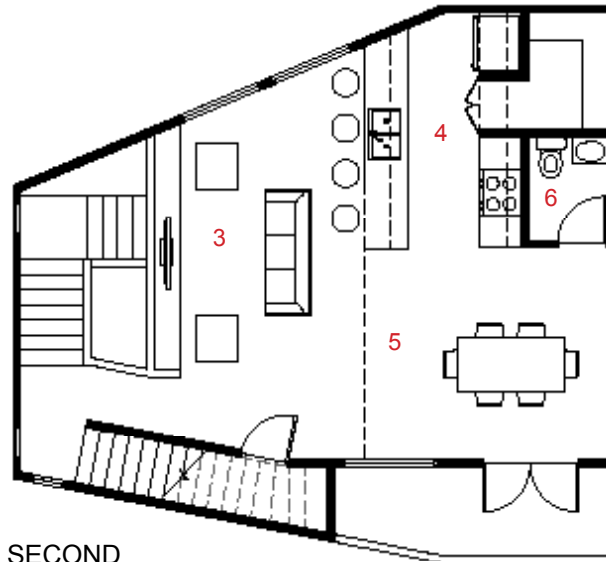




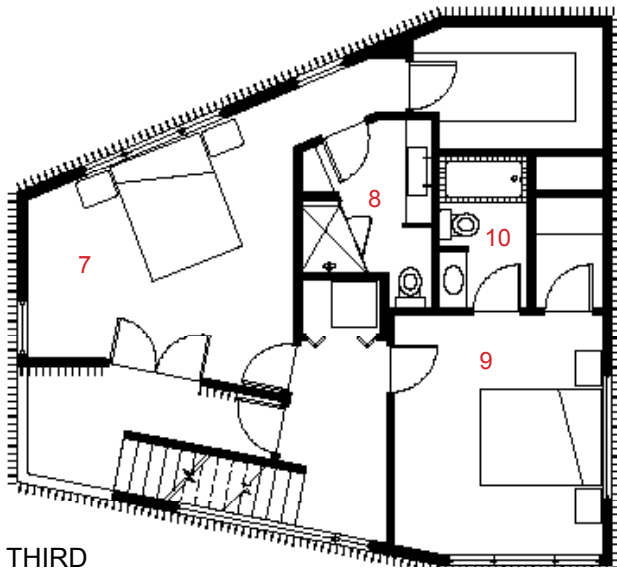




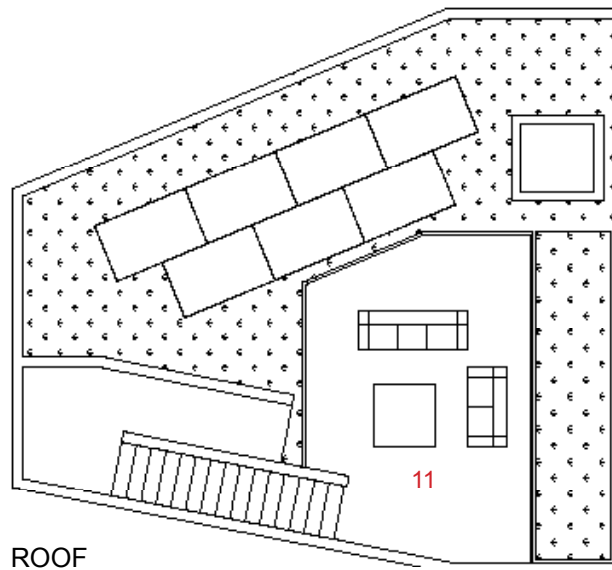
FIRST FLOOR



SECOND FLOOR



THIRD FLOOR



ROOF DECK

- 1 Entry
- 2 Garage
- 3 Living Room
- 4 Kitchen
- 5 Dining Room
- 6 Powder
- 7 Master Bedroom
- 8 Master Bathroom
- 9 Bedroom
- 10 Bathroom
- 11 Rooftop Terrace



END
SCHOOL
ZONE

SPEED
LIMIT
35

2 HOUR
PARKING
Blue Area

BIKE
LANE